

Los Angeles residential complex

Location **Lefke, Gaziveren**



About the project



Developer	MMT
Start of sale	01.02.2024
Key handover	2026
Houses/blocks	1
Building floor	16 Min 16 Max
Units total	177 - Studio, 87 - 1+1, 4 - 2+1

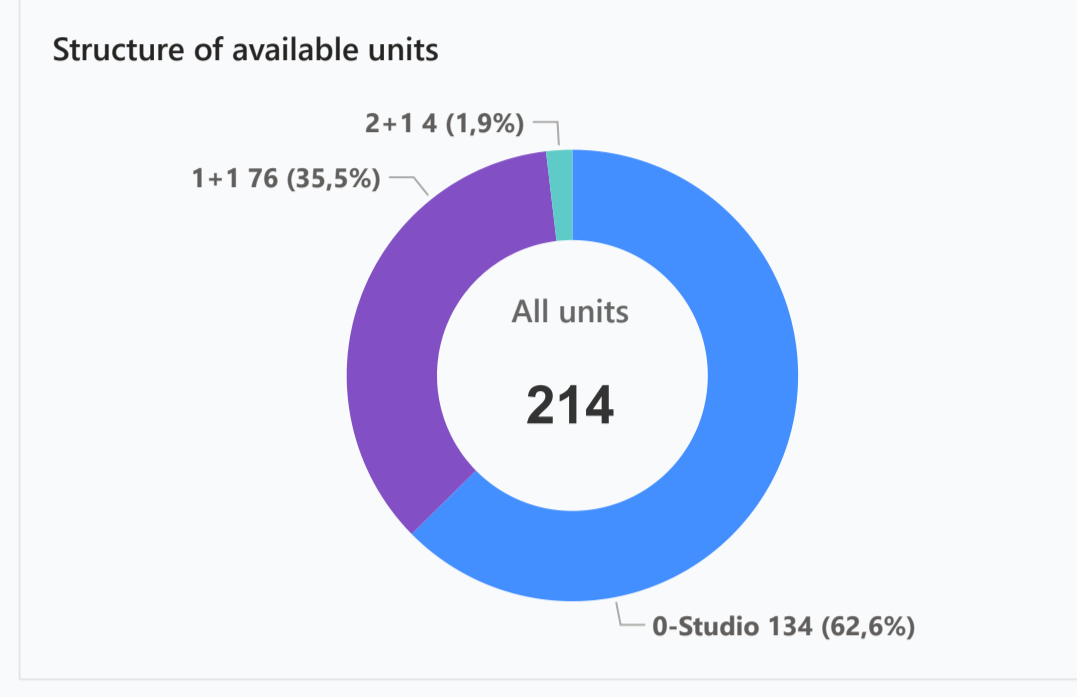
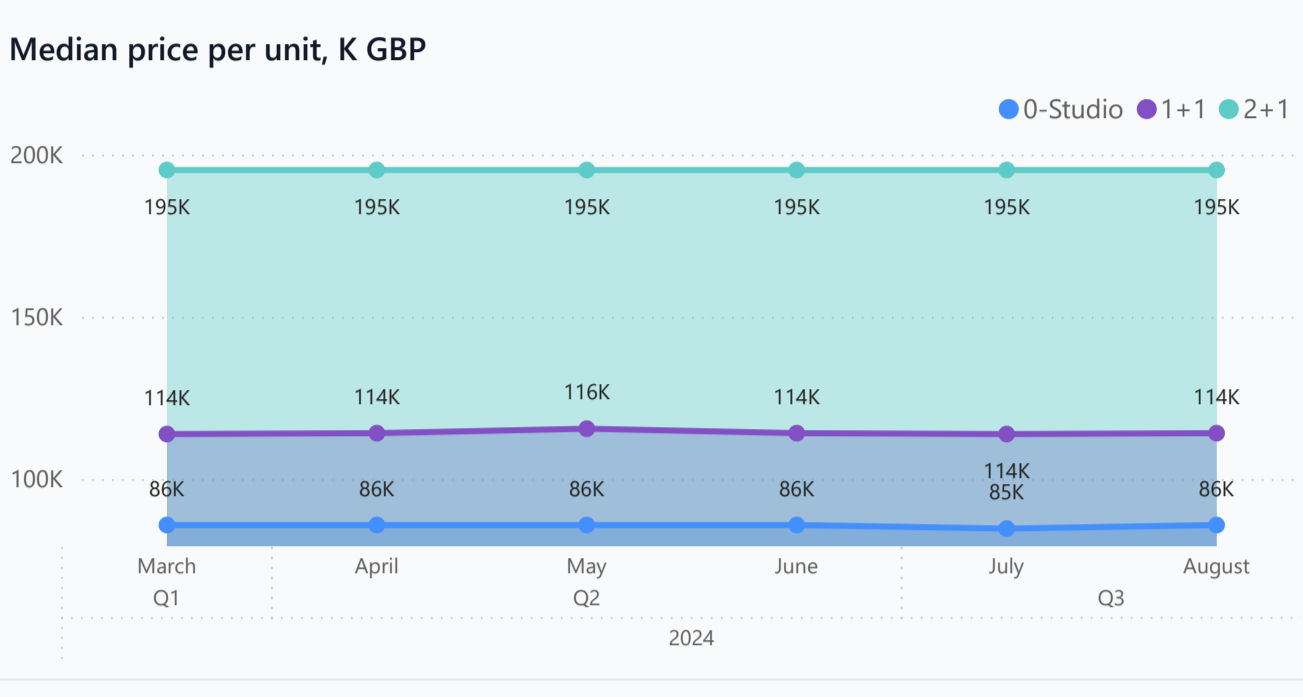
Distance to the sea - 500 m
 Distance to key locations:
 5.3 km to the university Airport 60 min. Supermarket 2 min. Pharmacy 8 min. School 2 min. Kindergarten 4 min. Hospital 9 min.

Los Angeles is a new large-scale resort complex located on the seashore in the gulf of Morphou in the Gaziveren Area of Northern Cyprus. It has an ideal location, in a sparsely populated, ecologically clean place, which is one of the reasons why many people who want to buy property in Cyprus prefer to live here. The complex is located right by the beautiful sandy beach, a short walk from the center of Gaziveren.

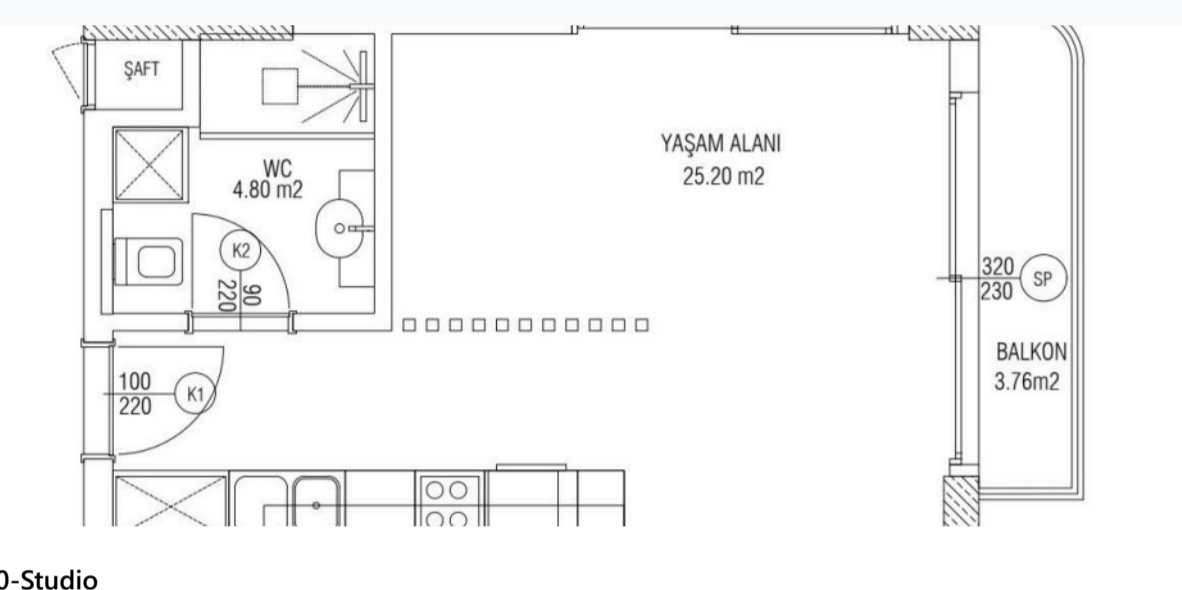
Complex infrastructure

- 24/7 reception
- Aqua park
- Fitness centre
- Hamam
- Indoor pool
- Kid's playground
- Laundry
- Open pool
- Parking
- Restaurant
- Rooftop pool
- Sauna
- Tennis court

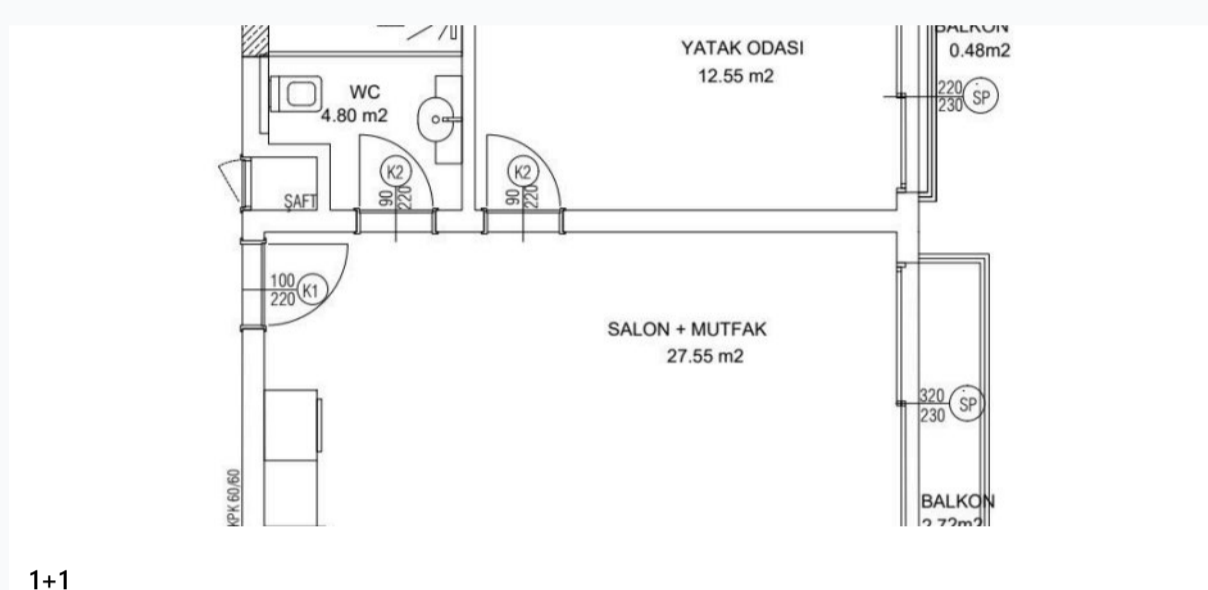
Available units **214** / 268 total



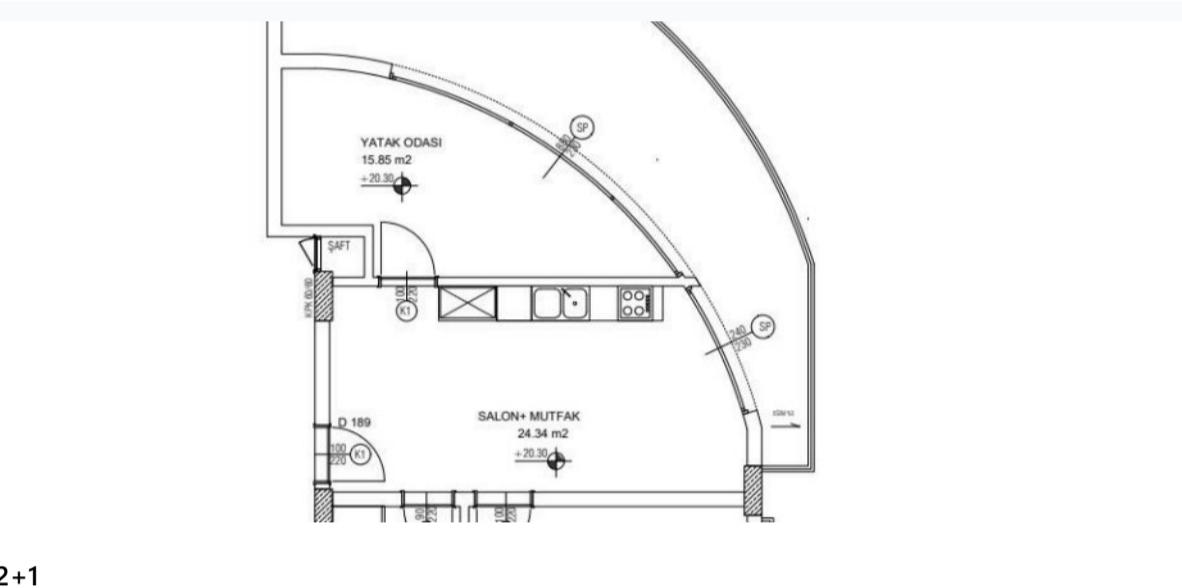
Plans



0-Studio



1+1



2+1

Payment plans

Deposit (non-refundable) 2000 GBP

Option	Down payment	Installments months	Discount	Offer
Option 1	35%	65% till key	-	-
Option 2	-	-	-	-
Option 3	-	-	-	-
Option 4	-	-	-	-

Special offer

Fully furnished design package

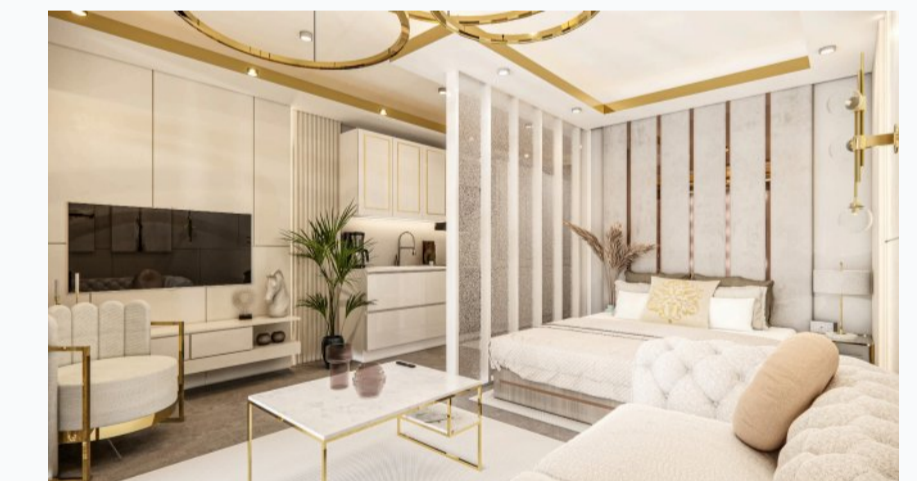
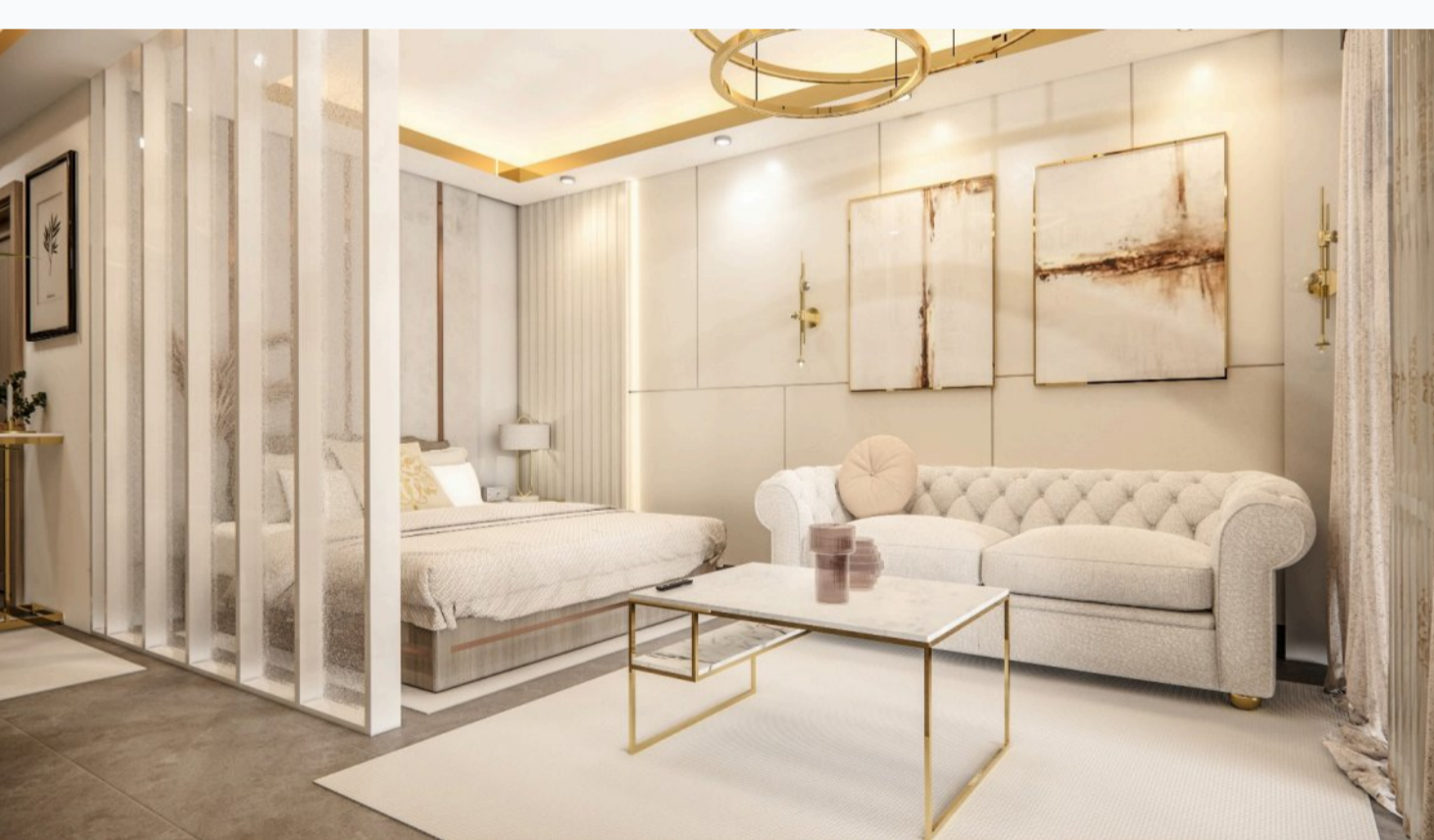
Rental guarantee

- Trafo 3000 GBP
- Resale after 50%
- Maintenance fee -
- Rental services no

Details

Bedrooms	Subtype	Block	Unit №	Floor	View	Bathroom	Internal area, sq. m	Balcony/ Terrace, sq. m	Rooftop terrace, sq. m	Garden, sq. m	Gross covered area, sq. m	Current price, GBP	Price per sqm, GBP
0-Studio	Flat	Los Angeles	241	11	Sea			3			52	121 000	2 327
0-Studio	Flat	Los Angeles	250	12	Mountains			3			52	102 300	1 967
0-Studio	Flat	Los Angeles	247	12	Sea			3			52	126 500	2 433
0-Studio	Flat	Los Angeles	248	12	Sea			3			52	126 500	2 433
0-Studio	Flat	Los Angeles	257	13	Mountains			3			52	105 600	2 031
0-Studio	Flat	Los Angeles	254	13	Sea			3			52	132 000	2 538
0-Studio	Flat	Los Angeles	255	13	Sea			3			52	132 000	2 538
0-Studio	Flat	Los Angeles	263	14	Mountains						50	108 900	2 178
0-Studio	Flat	Los Angeles	264	14	Mountains						50	126 500	2 530
0-Studio	Flat	Los Angeles	261	14	Sea			3			52	137 500	2 644
0-Studio	Flat	Los Angeles	262	14	Sea			3			52	137 500	2 644
0-Studio	Penthouse	Los Angeles	268	15	Mountains			45			90	187 000	2 078
0-Studio	Penthouse	Los Angeles	265	15	Sea			45			90	187 000	2 078
0-Studio	Penthouse	Los Angeles	266	15	Sea			45			90	187 000	2 078
1+1	Flat	Los Angeles	18	0	Mountains					10	75	90 000	1 200
1+1	Flat	Los Angeles	20	0	Mountains					10	75	90 000	1 200
1+1	Flat	Los Angeles	16	0	Mountains					15	78	95 000	1 218
1+1	Flat	Los Angeles	1	0	Sea					10	75	92 500	1 233
1+1	Flat	Los Angeles	10	0	Sea					10	75	92 500	1 233
1+1	Flat	Los Angeles	13	0	Sea					10	75	92 500	1 233
1+1	Flat	Los Angeles	15	0	Sea					15	78	95 000	1 218
1+1	Flat	Los Angeles	24	0	Sea					15	78	95 000	1 218
1+1	Flat	Los Angeles	46	01	Mountains			4			67	85 000	1 269
1+1	Flat	Los Angeles	44	01	Mountains			4			70	85 000	1 214
1+1	Flat	Los Angeles	27	01	Sea			6			72	87 500	1 215
1+1	Flat	Los Angeles	50	01	Sea			11			80	90 000	1 125
1+1	Flat	Los Angeles	41	01	Sea			12			78	90 000	1 154
1+1	Flat	Los Angeles	42	01	Sea			12			78	90 000	1 154

Interior specification



Interior specification

- Ceramic flooring
- Double glazed windows
- Fitted wardrobes in each bedroom
- Laminate flooring in the bedrooms

Exterior specification



Exterior specification

- Jacuzzi
- Landscape design
- Private Garden

Location of complex

